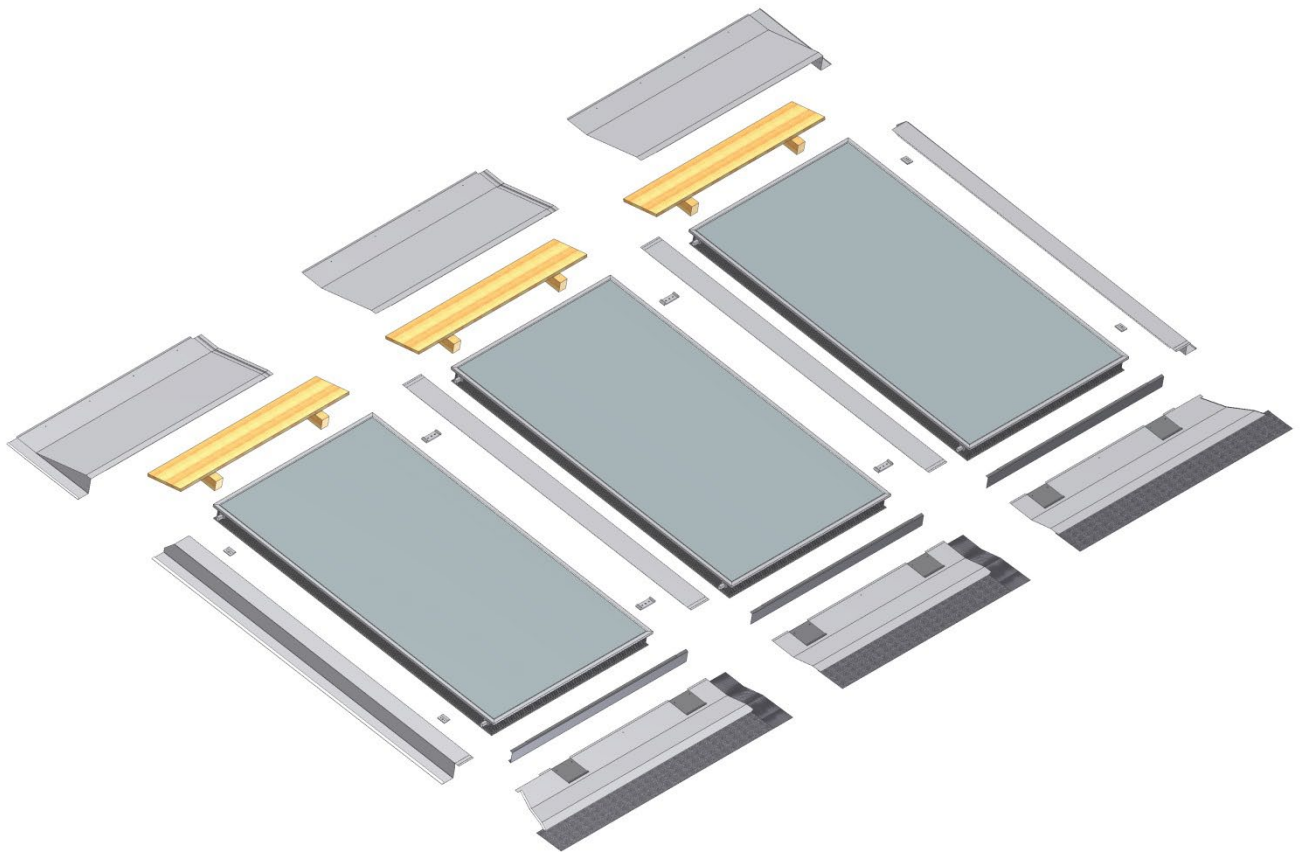


DE

**Montageanleitung Blecheinfassung
für sunWin 24 einreihig**

EN

**Assembling manual flashing
for sunWin 24 single row**



Montageanleitung Blecheinfassung für sunWin 24 einreihig

Assembling-manual flashing for sunWin 24 single row

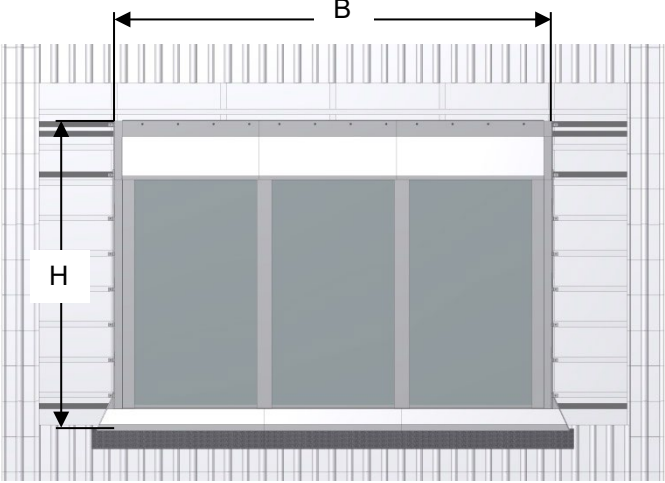
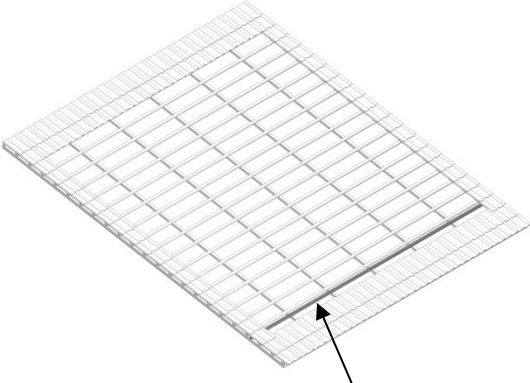
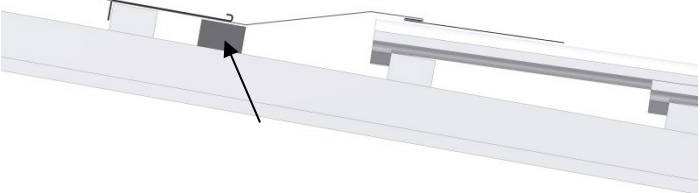
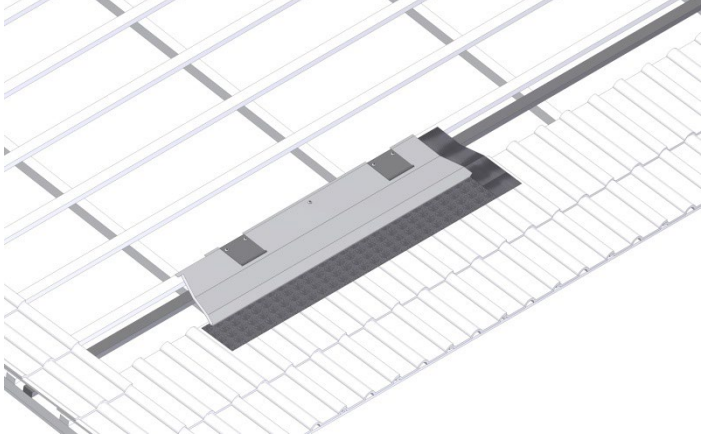
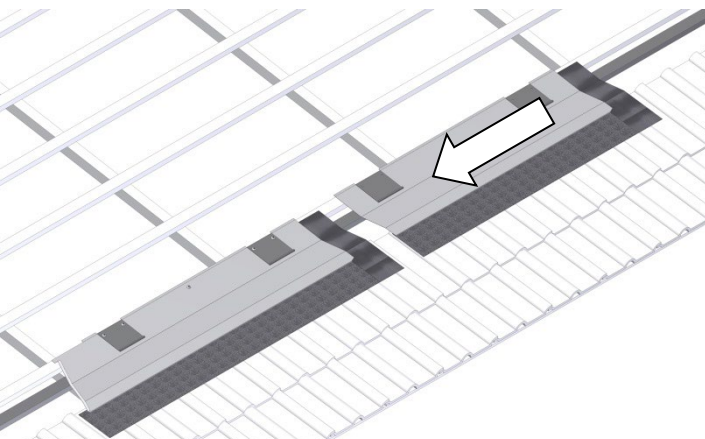
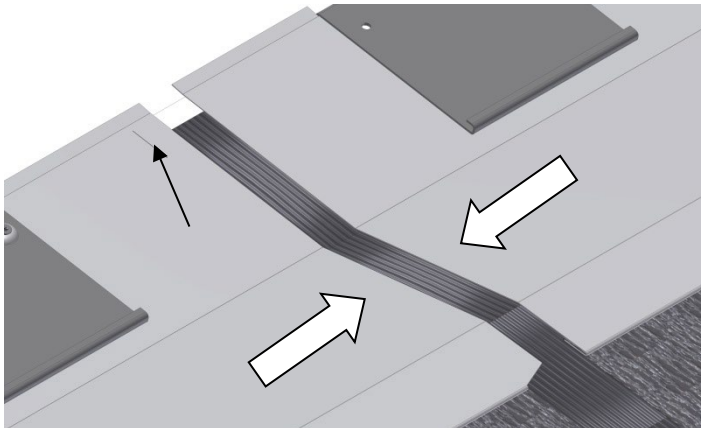
Übersicht Einzelteile:



Aufdeckmaße – einreihig / Cover measurements – single row										
Anzahl der Kollektoren Number of panels	1	2	3	4	5	6	7	8	9	10
ohne Einfassung HxB [mm] = 2064 x without flashing	1154	2378	3602	4826	6050	7274	8498	9722	10946	12170
mit Einfassung HxB [mm] = 2750 x with flashing	1474	2701	3928	5155	6382	7609	8836	10063	11290	12517

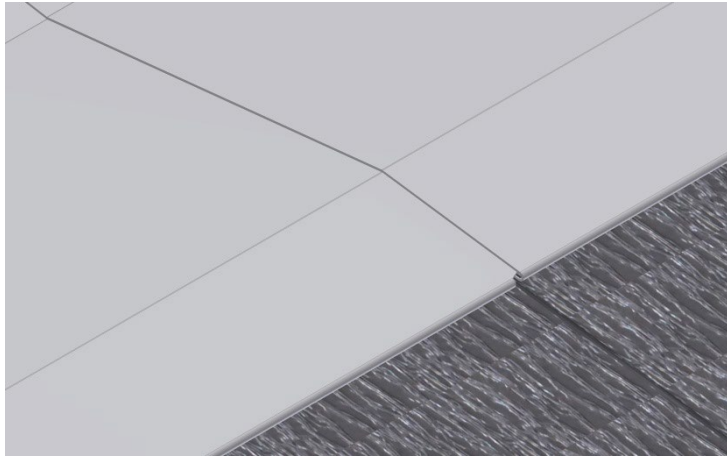
Montageanleitung Blecheinfassung für sunWin 24 einreihig

Assembling-manual flashing
for sunWin 24 single row

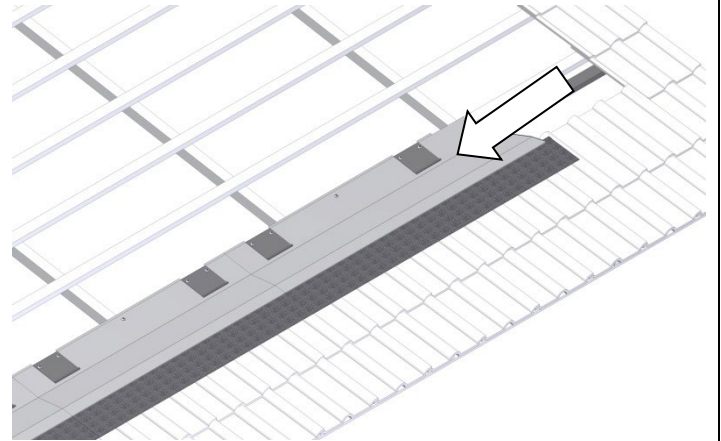
<p>1. Aufdeckmaße - Kollektorfeld <i>Cover measurements – panel field</i></p>	<p>2. Zusatzlatte Traufblech montieren <i>Fix additional batten</i></p>
	
<p>3. Zusatzlatte Traufblech Detail <i>Additional batten - detail</i></p>	<p>4. Traufblech links anbringen <i>Add fascia-board left</i></p>
	
<p>5. Traufblech "Mitte" <i>Add fascia-board "center"</i></p>	<p>6. Traufbleche bis Markierung stecken <i>Stick fascia-boards together til to check mark</i></p>
	

Montageanleitung Blecheinfassung
für sunWin 24 einreihig
Assembling-manual flashing
for sunWin 24 single row

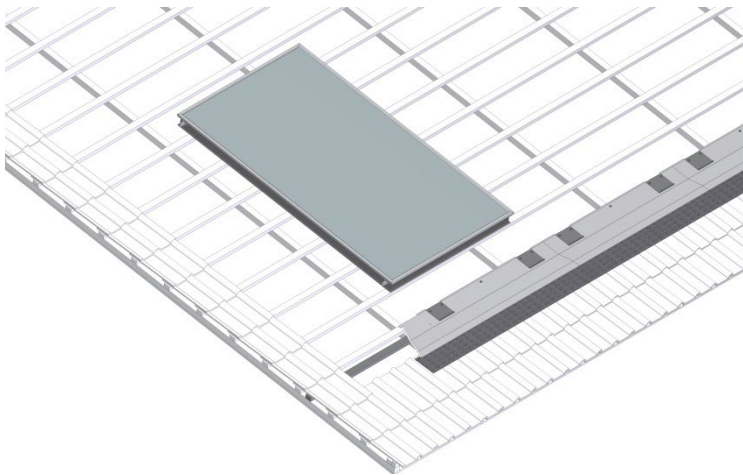
7. Traufbleche zusammengeführt
Fascia-boards together



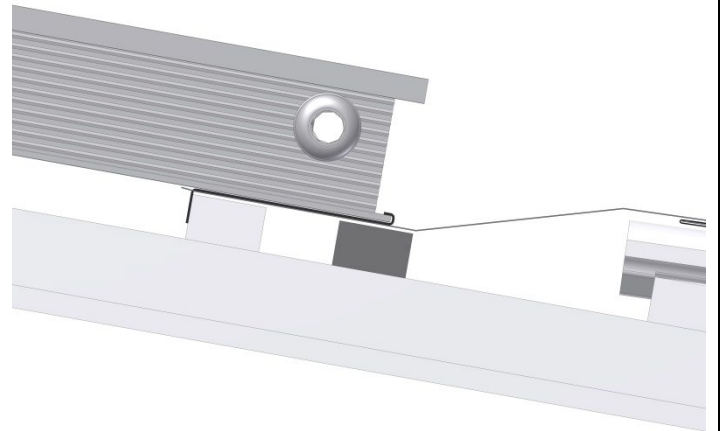
8. Traufblech rechts anbringen
Add fascia-board "right" and stick together



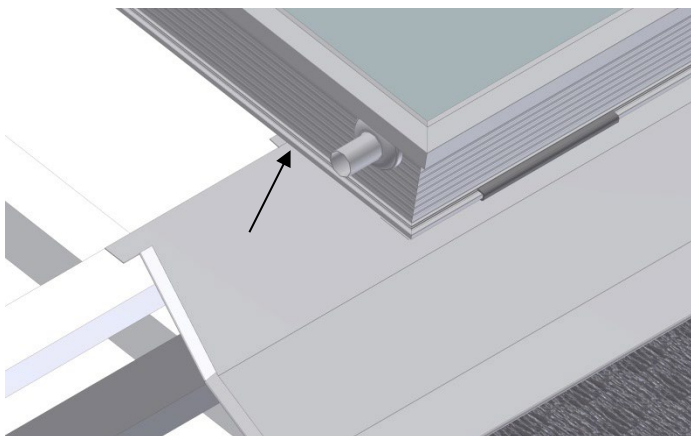
9. Kollektor platzieren – links unten beginnen
Situate panel – start with left side



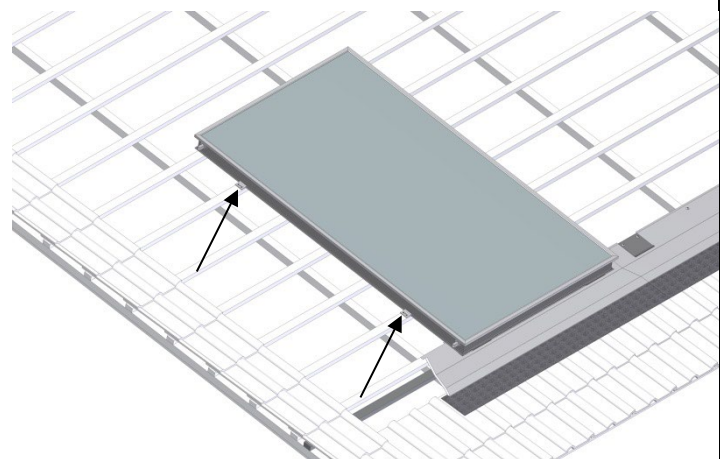
10. Kollektor und Traufblech - Schnitt
Panel and fascia-board – in section



11. Kollektor links unten – Markierung beachten !
Panel situated at left side bottom – attention to check mark !

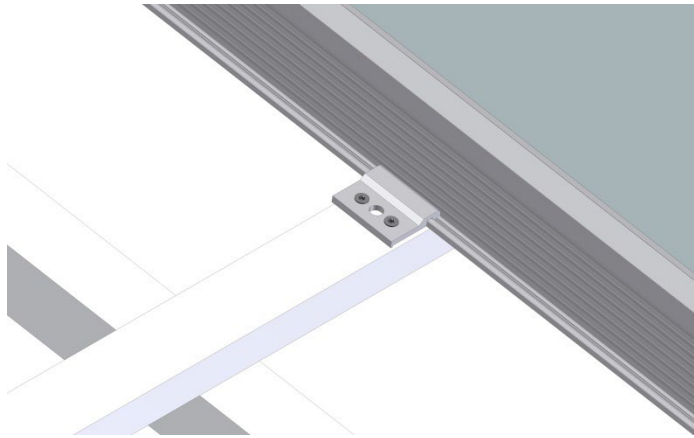


12. Montageklammern setzen und fixieren – Außen
Fasten and fix clamps – at border

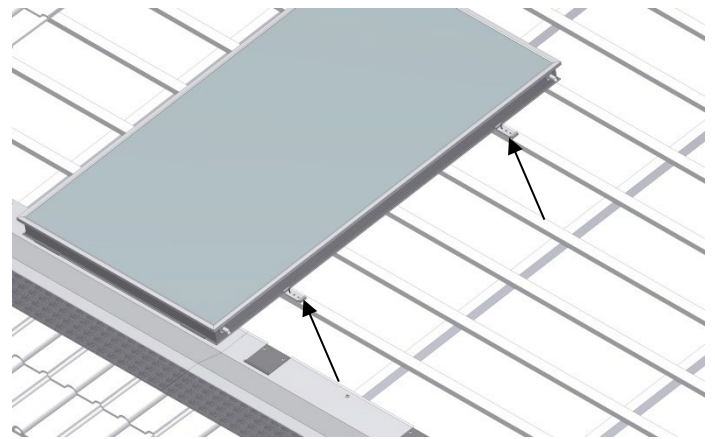


Montageanleitung Blecheinfassung
für sunWin AF24 einreihig
Assembling-manual flashing
for sunWin AF24 single row

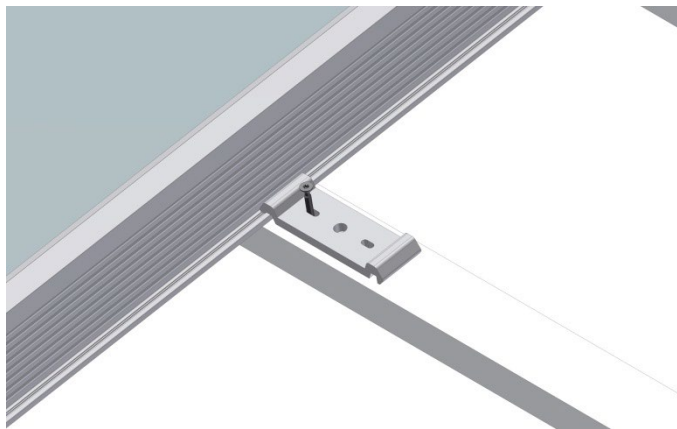
13. Montageklemme Außen – Detail
Fixing clamps – at border - detail



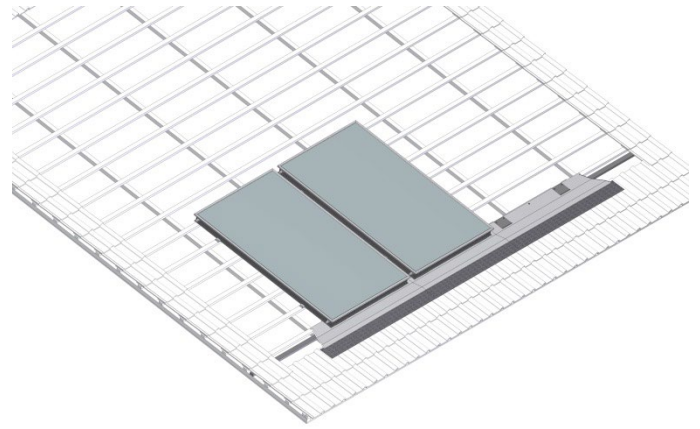
14. Montageklammen setzen und fixieren – Mitte
Fasten and fix clamps – at center



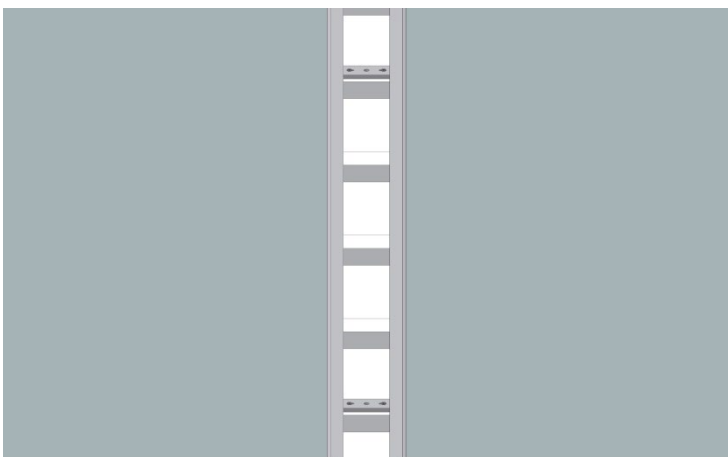
15. Montageklemme Mitte – Detail
Fixing clamps – border - detail



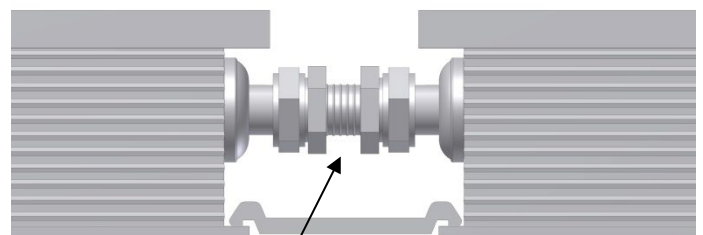
16. weitere Kollektoren anreihen
Situate „center“ panels



17. Zwischenabstand Kollektoren - Detail
Distance between each panel - detail

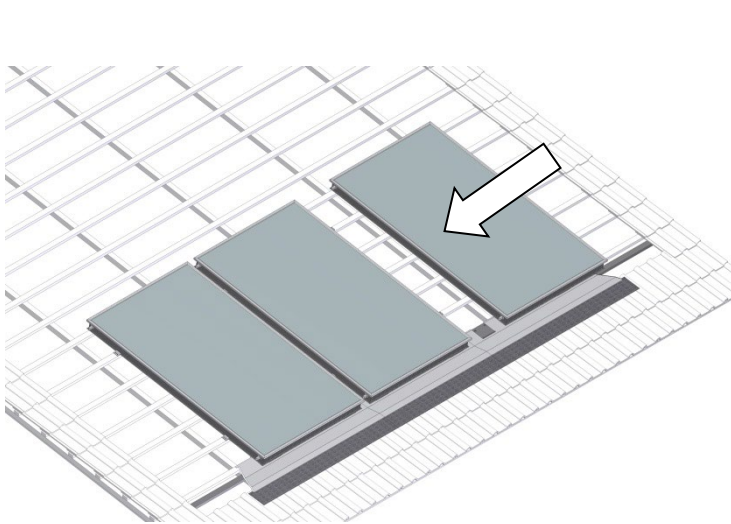


18. Kollektoren verbinden - Dehnverbinder gerade
Plug in panels with connector „straight“

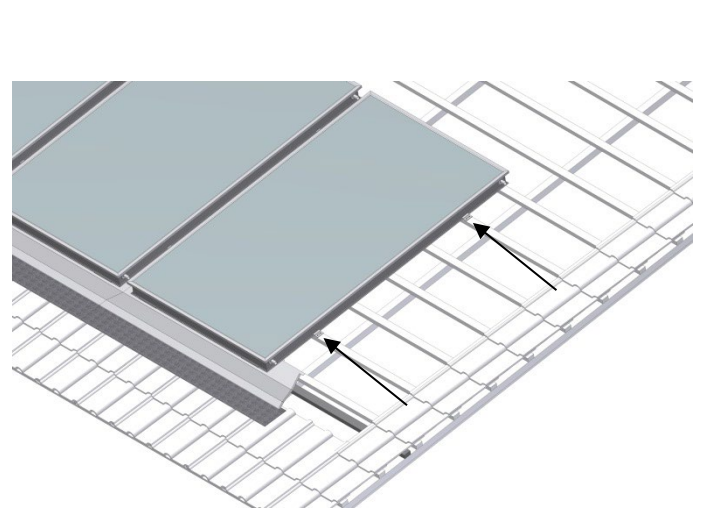


Montageanleitung Blecheinfassung
für sunWin 24 einreihig
Assembling-manual flashing
for sunWin 24 single row

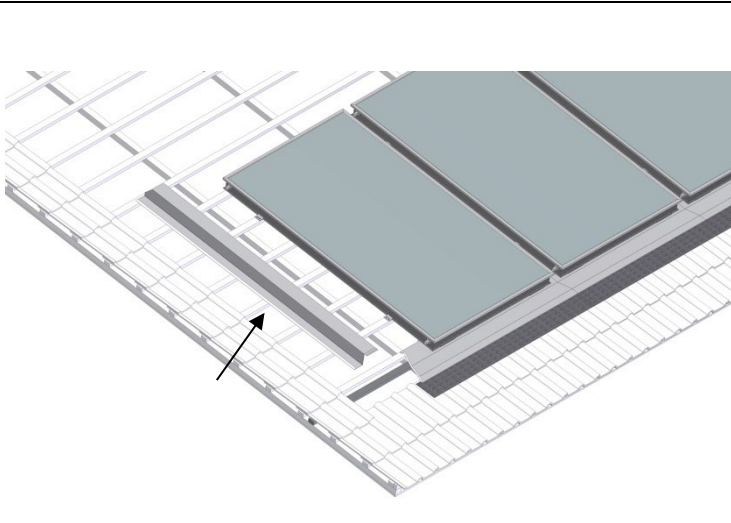
19. Letzten Kollektor anreihen - rechts außen
Situate last panel – at border right



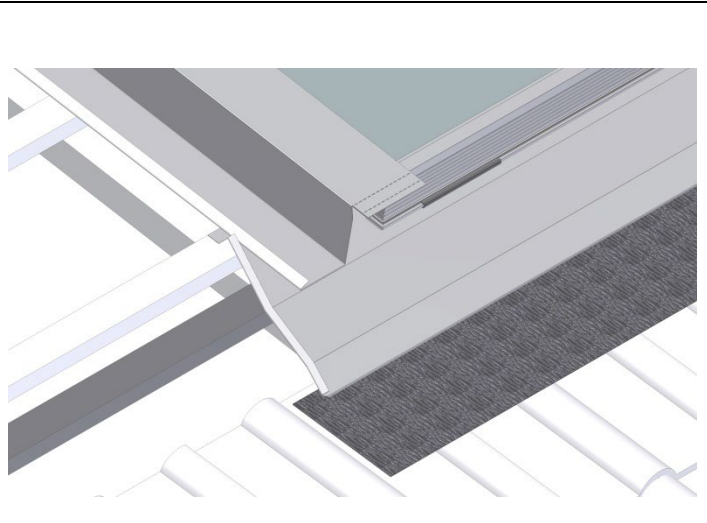
20. Montageklappen setzen und fixieren – Außen
Fasten and fix clamps – at border “right”



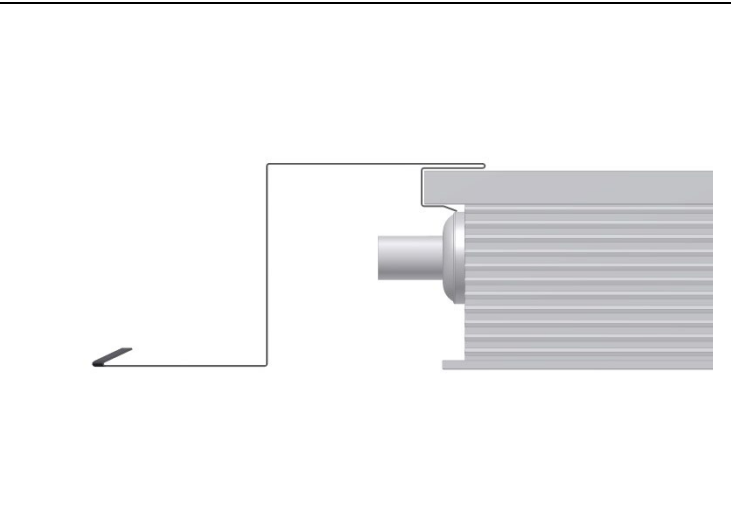
21. Seitenteil links anbringen
Situate side-part – border „left“



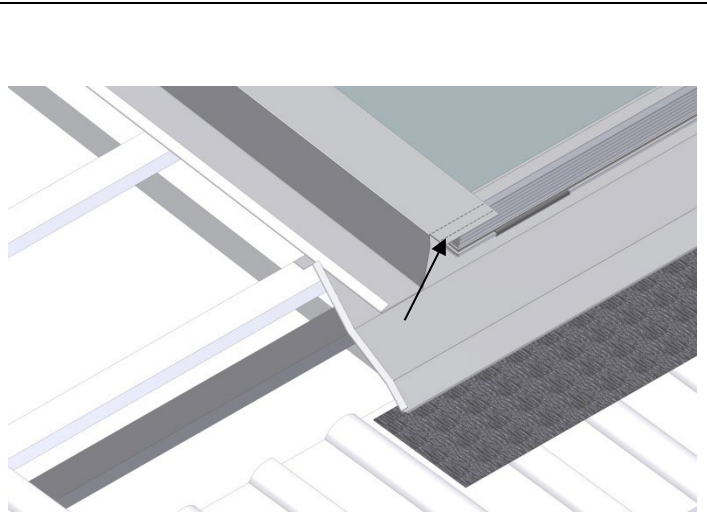
22. Seitenteil links - Detail unten
Side-part left – detail bottom



23. Seitenteil links – Schnitt
Side-part – border „left“ – in section

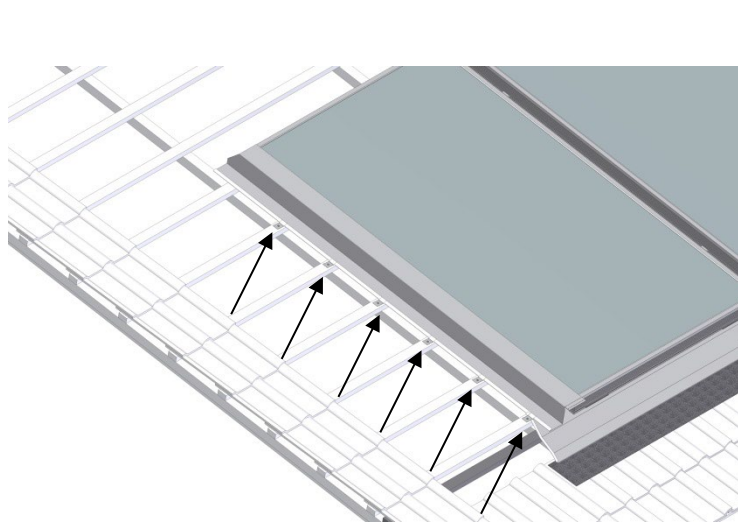


24. Traufblech links – mit Lasche
Fascia-board left – with strap

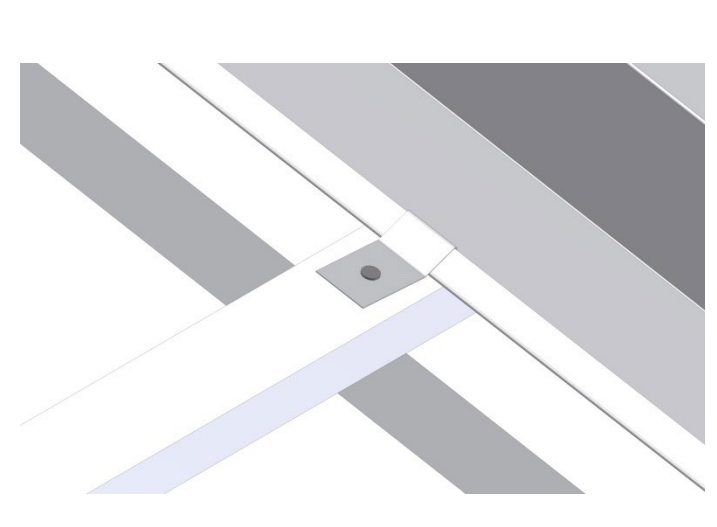


Montageanleitung Blecheinfassung
für sunWin AF24 einreihig
Assembling-manual flashing
for sunWin AF24 single row

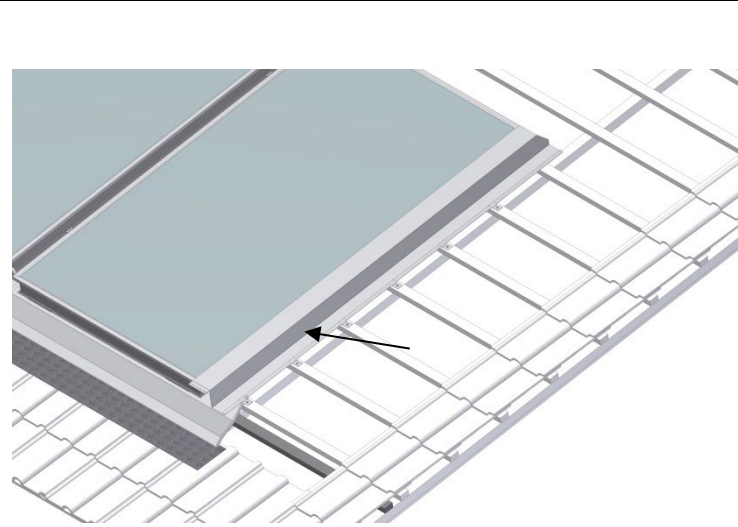
25. Seitenteil links - Hafter anbringen
Side-part – border „left“ – fix the nails



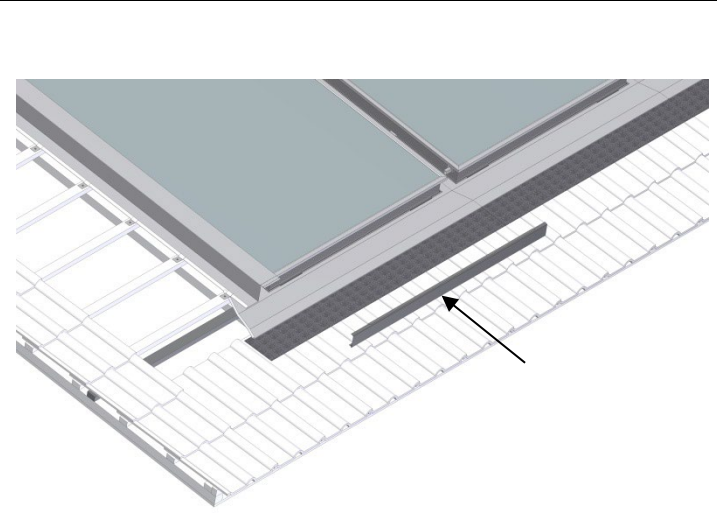
26. Fixierung mittels Hafter – Detail
Fixation of the nails - detail



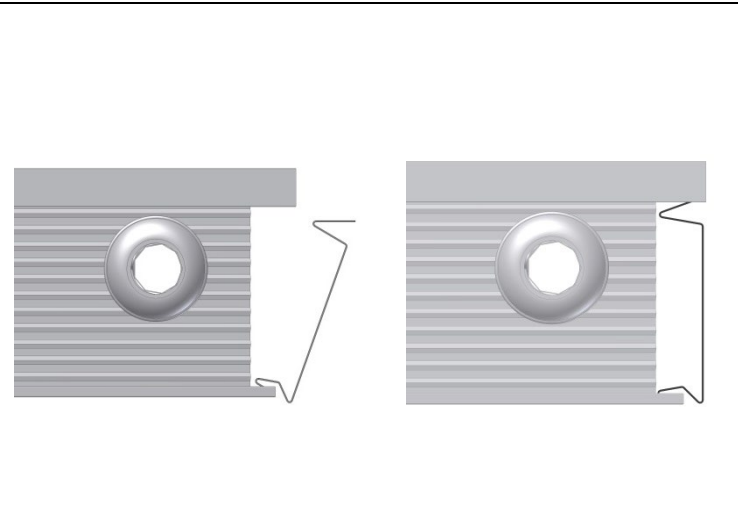
27. Seitenteil rechts anbringen – einrasten
Side-part – border „right“ – lock and snap in



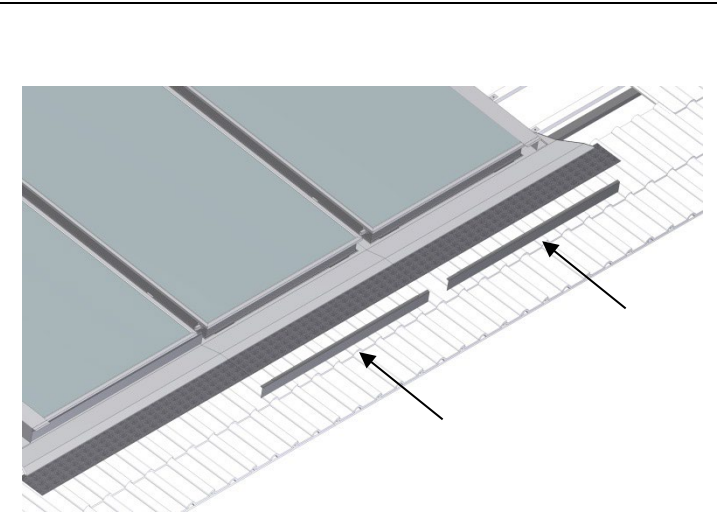
28. Traufblech Blende links unten anbringen
Situate fascia-board faceplate – bottom left



29. Traublech Blende – Schnitt
Fascia-board faceplate – in section

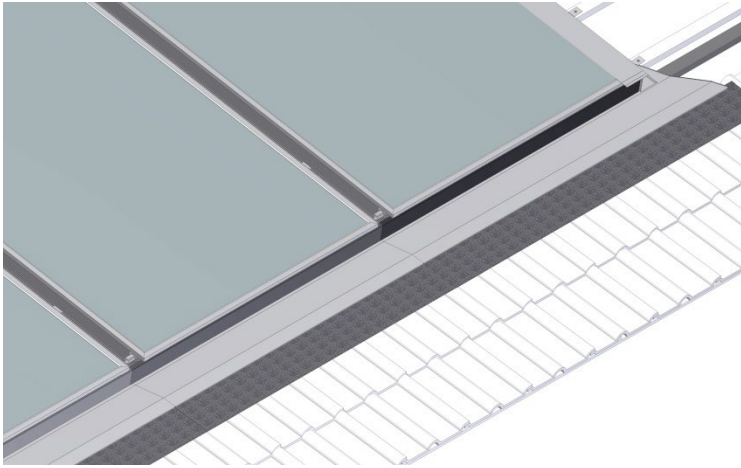


30. Traublech Blende Mitte und rechts anbringen
Situate fascia-board faceplates – „center“ and right

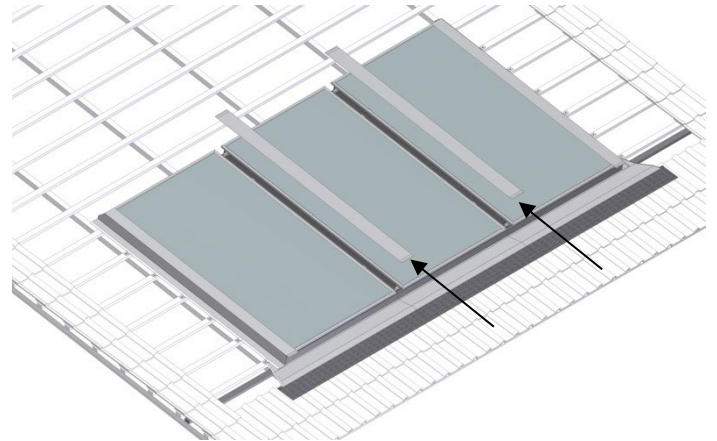


Montageanleitung Blecheinfassung
für sunWin 24 einreihig
Assembling-manual flashing
for sunWin 24 single row

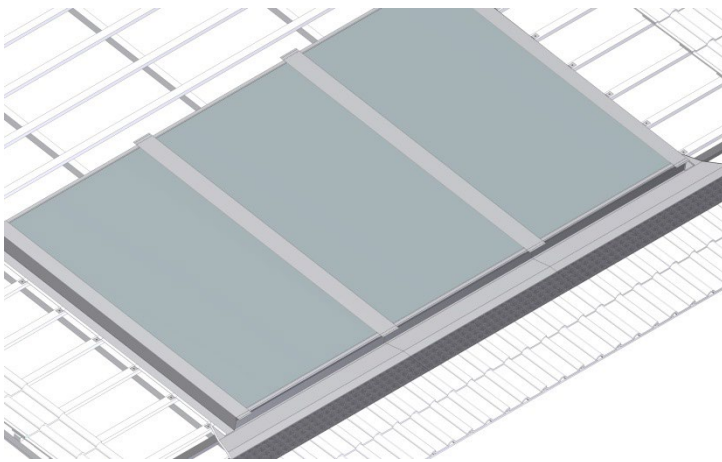
31. Traufblech Blende montiert und eingerastet
Fascia-board faceplates situated and locked



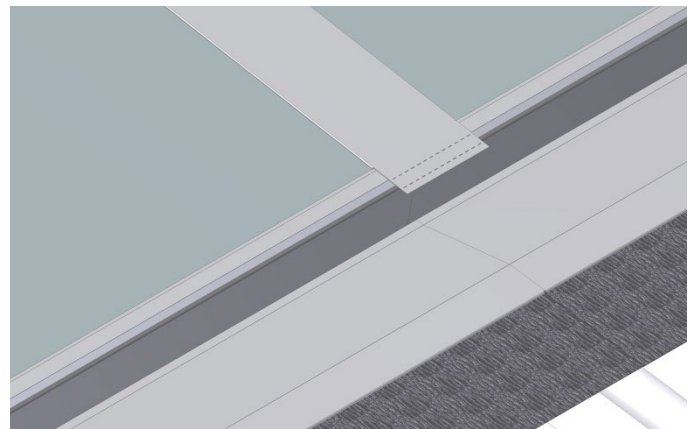
32. Zwischenbleche montieren – einrasten
Situate Middle-boards – lock and snap in



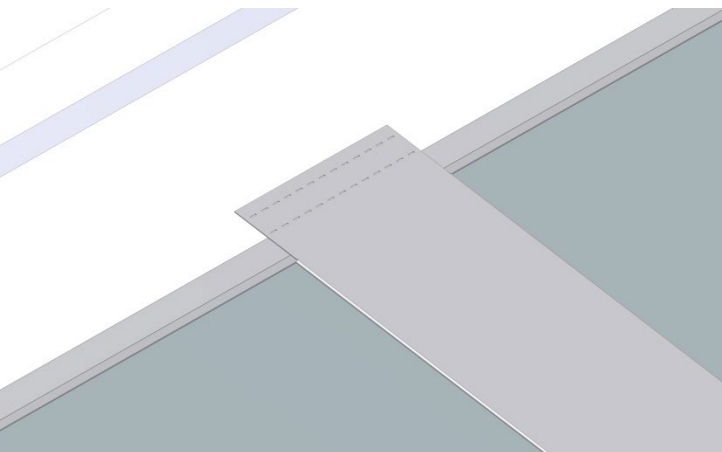
32a. Zwischenbleche eingerastet
Middle-boards – locked



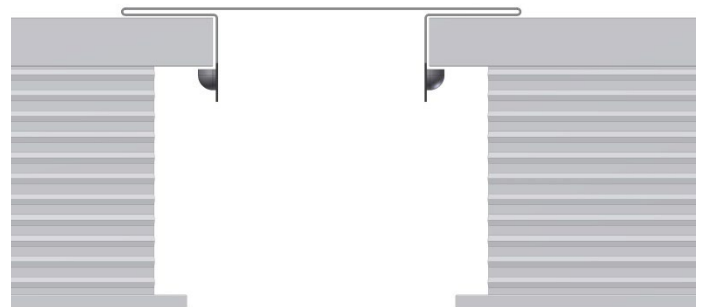
33. Zwischenblech mit Lasche - Detail unten
Middle-boards with strap – detail



34. Zwischenblech mit Lasche - Detail oben
Middle-boards with strap – detail on top

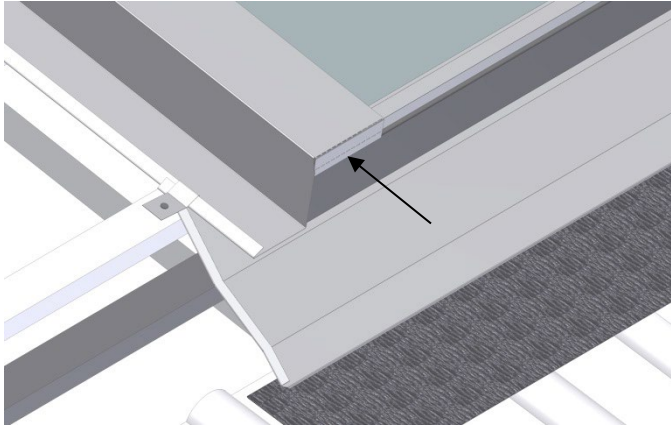


35. Zwischenbleche – Schnitt
Middle-boards – in section

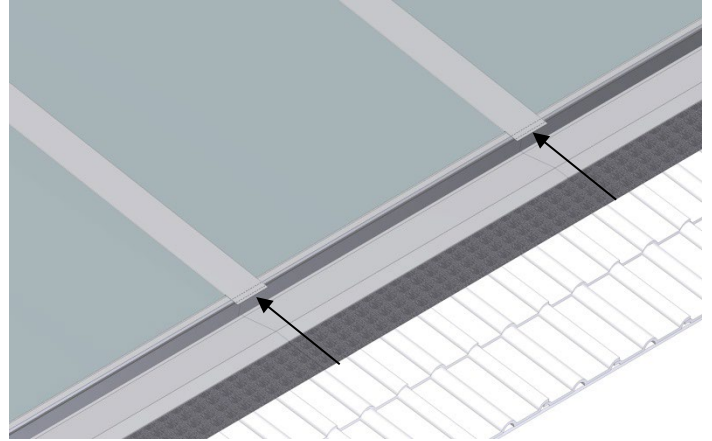


Montageanleitung Blecheinfassung
für sunWin AF24 einreihig
Assembling-manual flashing
for sunWin AF24 single row

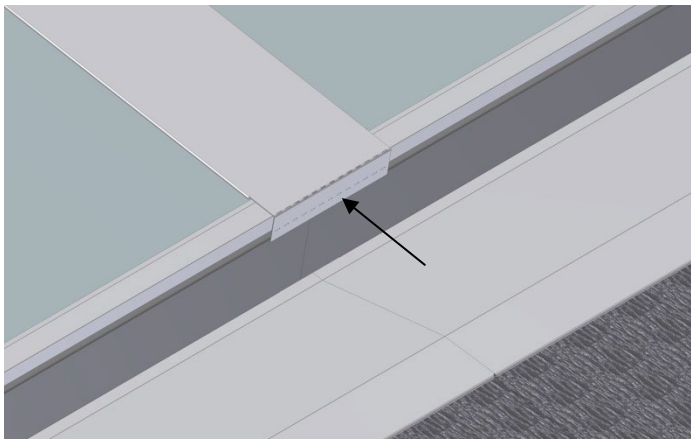
36. Seitenteile - Laschen umbiegen
Side-boards – bend the strap



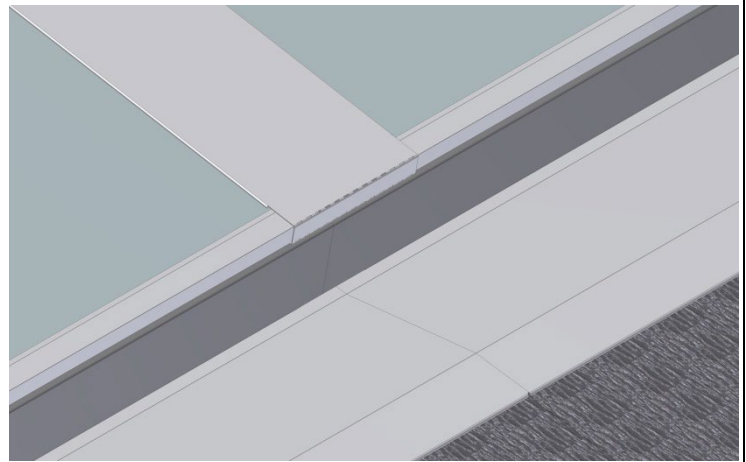
37. Zwischenbleche - Laschen unten
Middle-boards – with strap bottom



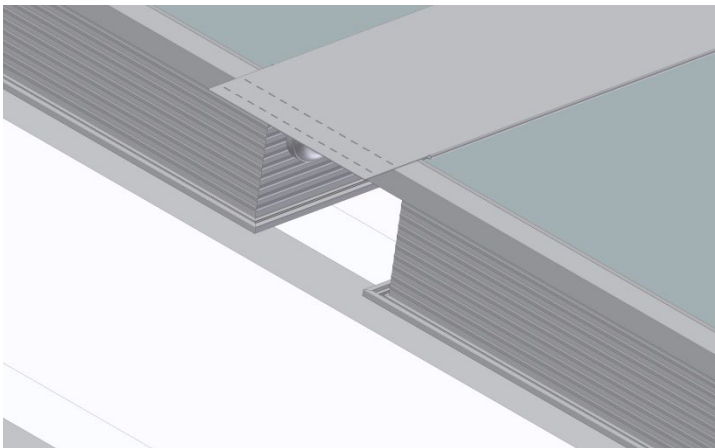
38. Zwischenbleche - Laschen unten umbiegen
Middle-boards – bend the strap on bottom



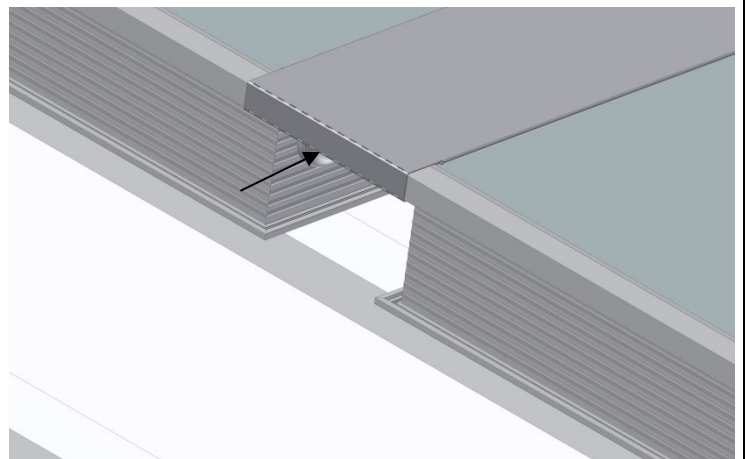
38a. Laschen umgebogen
Middle-boards – bended strap



39. Zwischenbleche - Laschen oben
Middle-boards – strap on top

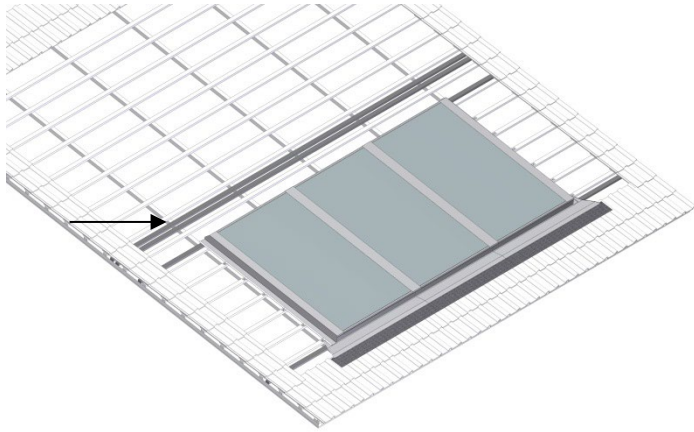


40. Zwischenbleche - Laschen oben umbiegen
Middle-boards – bend the strap on top

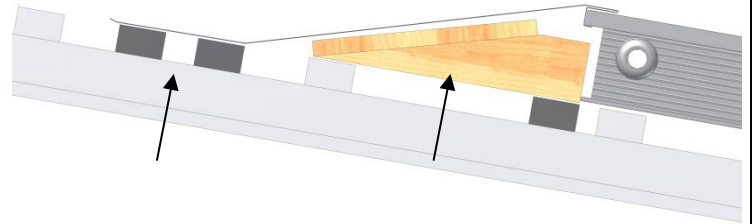


Montageanleitung Blecheinfassung
für sunWin 24 einreihig
Assembling-manual flashing
for sunWin 24 single row

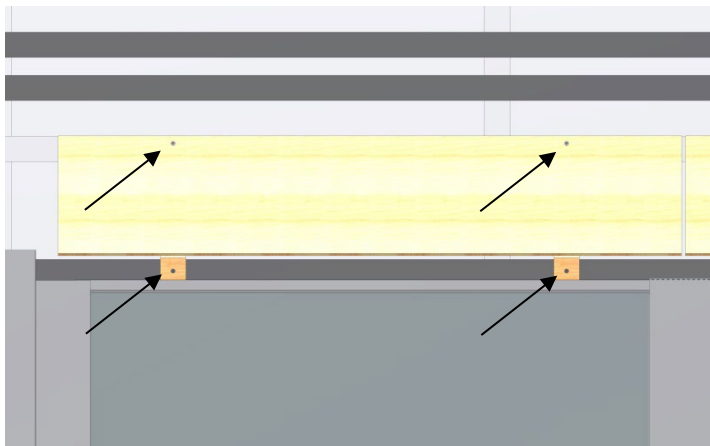
41. Zusatzlatten oben anbringen
Fix additional battens on top



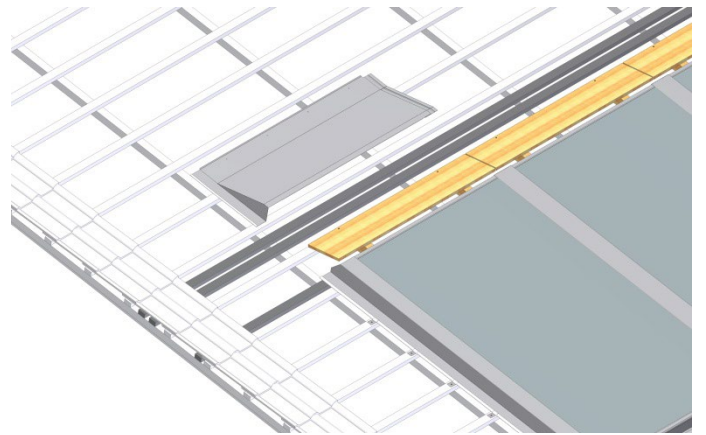
42. Zusatzlatten u. Holzkeile oben – Schnitt
Additional battens and wooden wedge on top – in section



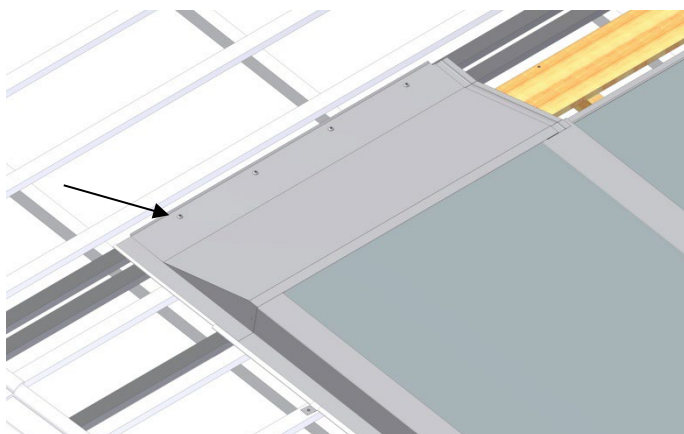
43. Holzkeile verschrauben - oben
Srew wooden wedge - on top



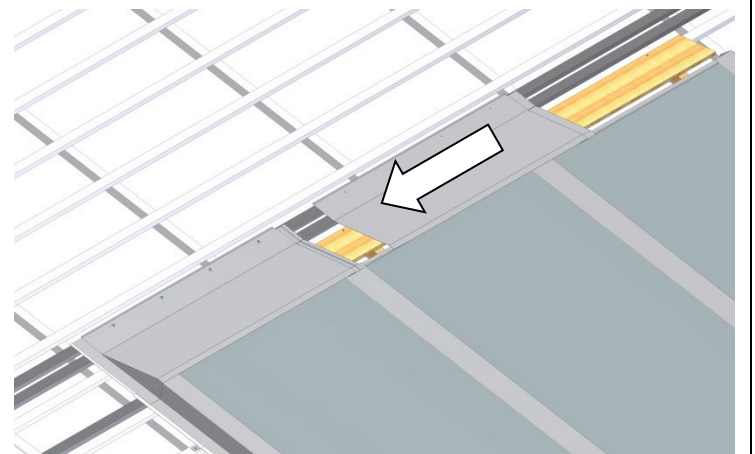
44. Firstblech links anbringen
Situate ridge-board on top - border left



45. Firstblech links (Außen) verschrauben
Screw ridge-board on top - border left

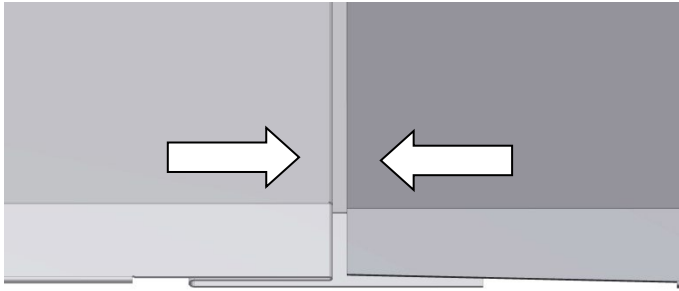


46. Firstblech Mitte montieren
Situate ridge-board on top – center



Montageanleitung Blecheinfassung
für sunWin AF24 einreihig
Assembling-manual flashing
for sunWin AF24 single row

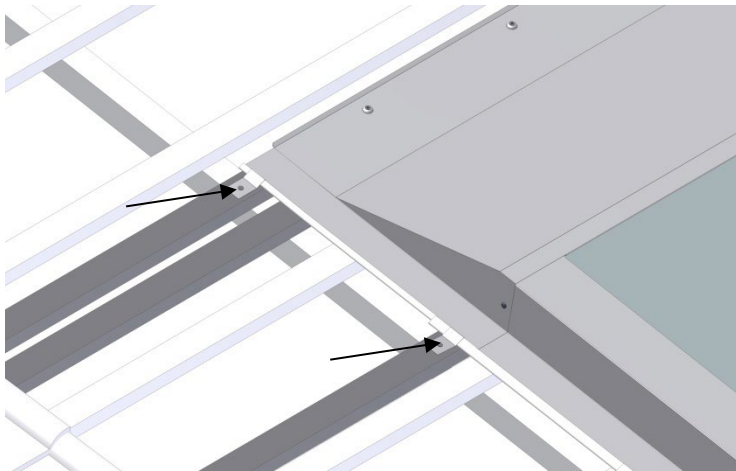
47. Firstbleche zusammenstecken
Ridge-board on top – stick together



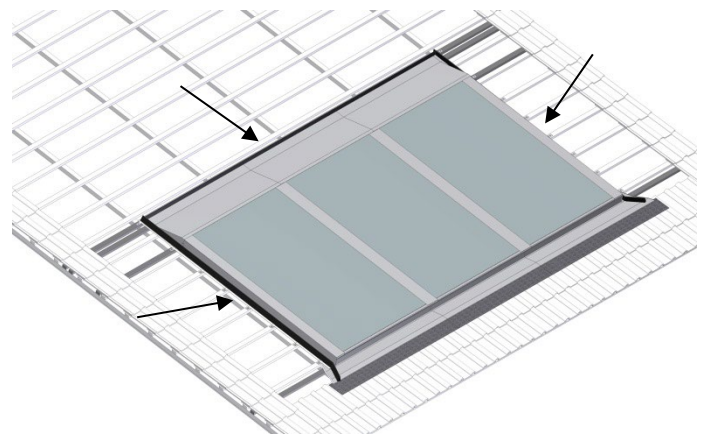
48. Firstblech rechts montieren u. verschrauben
Situate and screw ridge-board on top - border right



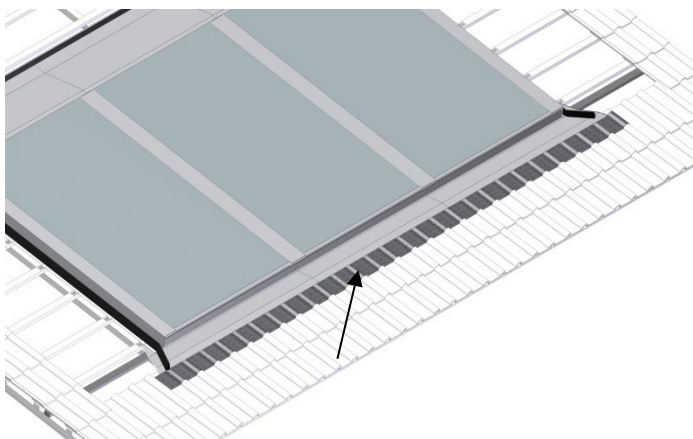
49. Firstblech links u. rechts - Hafter setzen
Ridge-board on top - border right and left – fix the nails



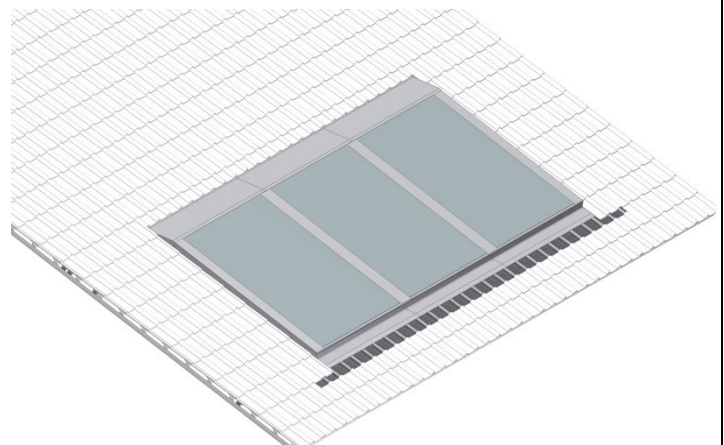
50. Kehldichtkeile anbringen – oben und seitlich
Situate sealing-wedges on top and border



51. Schürze „Easyform“ anformen - unten
Shape the „Easyform“ skirt – at bottom



52. Fertig
Ready



Montageanleitung Blecheinfassung für sunWin 24 einreihig

Assembling-manual flashing for sunWin 24 single row

**Empfohlenes Verschaltungsschema / recommended
interconnection-scheme:**

