



Installation rack varioFix for on-roof collectors gevoSol / sunnySol

Installation rack varioFix for on-roof collectors gevoSol / sunnySol

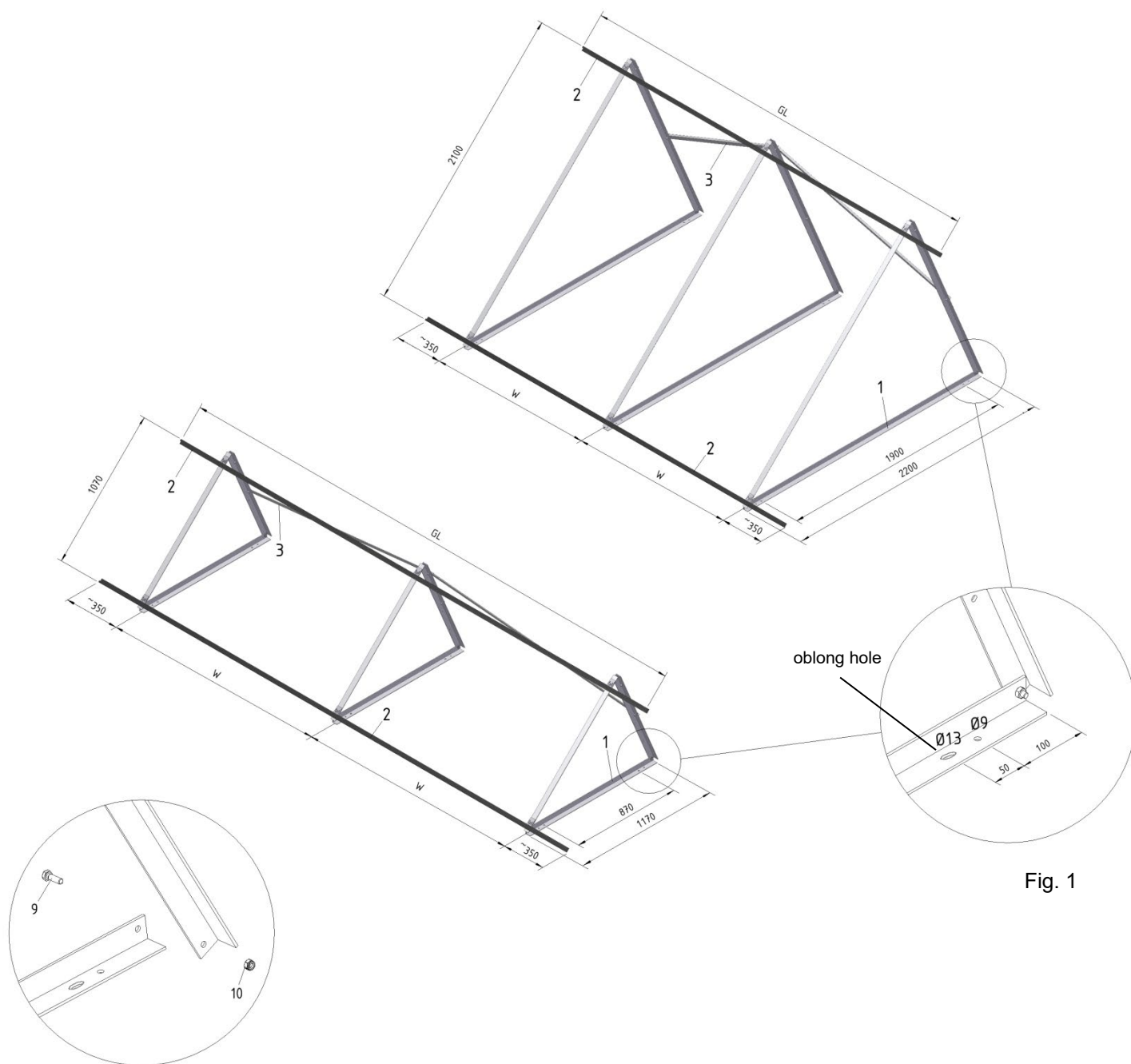


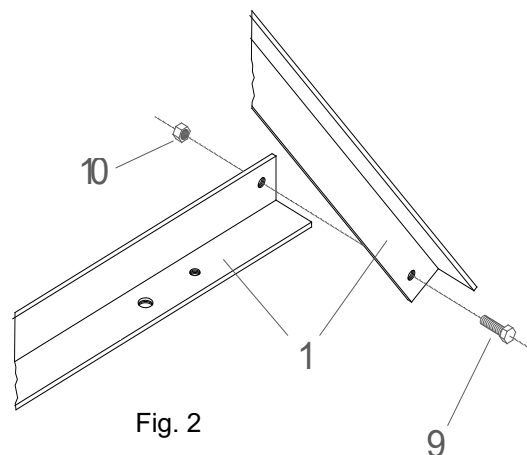
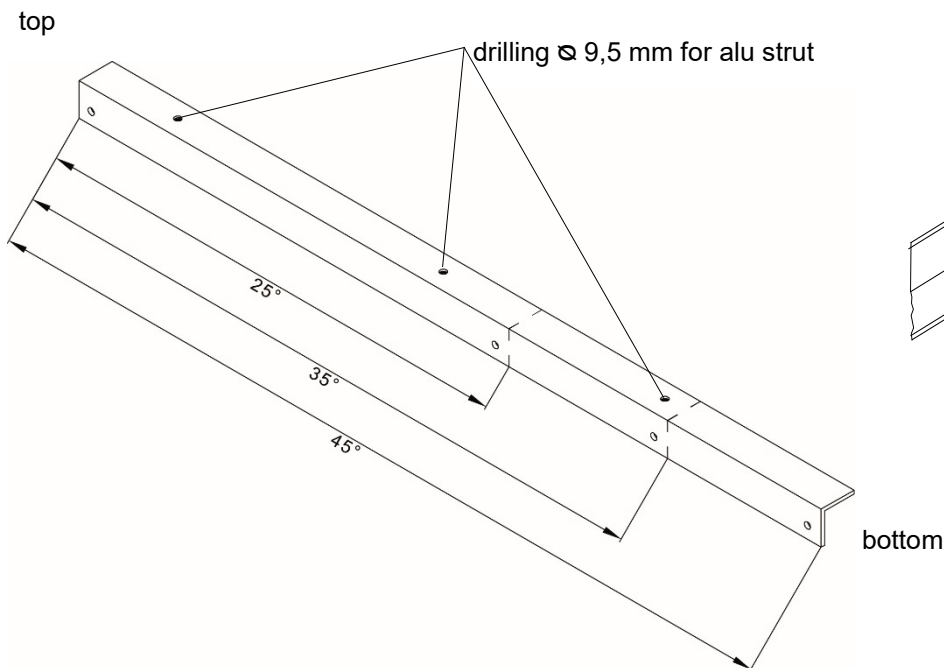
Fig. 1

Pos.	Designation	Fixing rows (triangle)		
		2	3	
1	Installation rack Alu 40 x 40 x 4 mm	2	3	
3	Alu strut	2	2	
5	Clamp	4	6	
6, 9	Screw M8 x 20 mm_V2A	8	12	
7	Carriage-bolt M8 x 25 mm_V2A	4	6	
10	Nut SS M8_V2A	12	18	
Required accessories		Number of collectors		
		1	2	3
2	Support profile	2	2	2
4	Connecting piece	2	2	2
8	Self-drilling screw 4,8 x 16 mm	2	4	6

Installation rack varioFix for on-roof collectors gevoSol / sunnySol

1. Fix the installation frames (1) using the screws (9) and the nuts (10) as illustrated in the figure 2 below.

Possible only with support rack 45°:



-> For angles of inclination of 35° and 45°, the lowest drill hole of the support part is to be used to fix the bracing. At an angle of inclination of 25°, the middle drill hole is to be used to fasten the bracing.

The rear part (see sketch above) of the supporting frame (1) is dimensioned for achieving a maximum inclination of 45°. For achieving the inclinations 35° or 25° the profile can be cut according to the length table given below.

Length table in mm		
Angle	VERTIKAL Type 23 and 26	HORIZONTAL Type 23 and 26
25°	969 mm	523 mm
30° (optional)	1153 mm	620 mm
35°	1335 mm	716 mm
40° (optional)	1508 mm	810 mm
45°	1691 mm	903 mm

Dimensions and weights

Number of collectors vertical, Type 23	1	2	3	4	5	6	7	8	9	10
Supporting frames	2	2	3	4	5	6	7	8	9	10
H (mm)	2100									
GL (mm)	1070	2200	3330	4460	5590	6720	7850	8980	10110	11240
W (mm)	750	1500	1315	1253	1222	1204	1192	1183	1176	1171
Weights (kg)	14	16	21	32	37	42	53	64	67	74
Number of collectors vertical, Type 26	1	2	3	4	5	6	7	8	9	10
Supporting frames	2	3	4	5	6	7	8	9	10	11
H (mm)	2100									
GL (mm)	1230	2520	3810	5100	6390	7680	8970	10260	11550	12840
W (mm)	910	910	1037	1100	1138	1163	1181	1195	1206	1214
Weights (kg)	17	26	27	32	39	54	61	70	79	88
Number of collectors horizontal, Type 23	1	2	3	4	5	6	7	8	9	10
Supporting frames	2	3	4	5	6	7	8	9	10	11
H (mm)	1070									
GL (mm)	2100	4260	6420	8580	10740	12900	15060	17220	19380	21540
W (mm)	1400	1780	1907	1970	2008	2033	2051	2065	2076	2084
Weights (kg)	13	20	28	35	43	52	59	65	72	78
Number of collectors horizontal, Type 26	1	2	3	4	5	6	7	8	9	10
Supporting frames	2	3	4	5	6	7	8	9	10	11
H (mm)	1230									
GL (mm)	2100	4260	6420	8580	10740	12900	15060	17220	19380	21540
W (mm)	1400	1780	1907	1970	2008	2033	2051	2065	2076	2084
Weights (kg)	13	20	28	35	43	52	59	65	72	78

ATTENTION!

The above tables serve as guidelines. The real required number of rows (installation racks) depends on fixing the structural requirements on site, and depending on the application with the applicable standards and regulatory documents as well, in particular, the standards EN1991-1, DIN1055 respectively ÖNORM M 7778.

- Determine the position of the installation racks (1) on the roof – considering the measurement (H, GL, W) given in the table above – and fix the installation frames using an adequate type of mounting set for installation racks or other adequate material on the ground.
- Install the alu struts (3) using the screws (6) and nuts (10) in the corresponding drilling on the installation rack (Fig. 4). The required drillings on the alu strut have to be made on site. The first alu strut must be installed between the lower drilling of the first triangle and the upper drilling of the second triangle. The second strut is installed from above to below (see Fig. 3 below).

Fig. 3: Example with 6 fixing rows (supporting frames) and alu struts



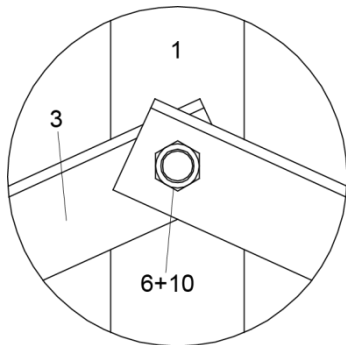


Fig. 4

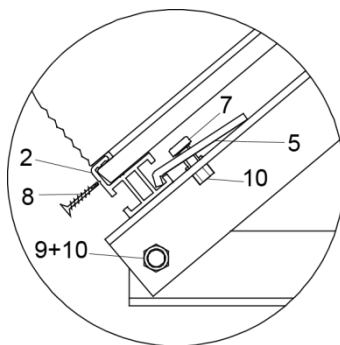


Fig. 5

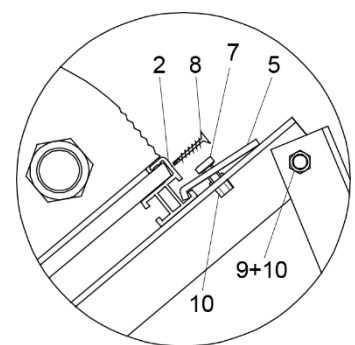


Fig. 6

- Fix the supporting profile below (2) using the clamps (5), the screws (7) and the nuts (10) on the diagonal part of the frame (see Fig. 5).

5. Installation of the collectors:

Push the collector into the nut of the supporting profile (2) at the bottom. Afterwards, install the supporting profile on top, but don't fix the screws completely. Connect each collector via the connection screws. First, tighten them using 2 open-ended spanner to obtain the proper distance between the collectors.

NOTE! Before screwing of the compounds have the treads and the sealing surface are greased (e.g. silicone milk). It's necessary to pull against while screwing otherwise the collecting pipe could be rotated!

- Fix the supporting profile on top (2) in the same way using the clamps (5), the screws (7) and the nuts (10) on diagonal part of the installation frame into the corresponding drilling (see Fig. 6).
- Finally check that all clamps (5) and screws (6, 7 and 9) are tightened completely.
- In case of supporting profiles (2) have to be combined the connection piece (4) is pushed into the nut of the supporting profile (2) as illustrated in Fig. 7.
- Fix the collectors with the self-drilling screws (8) on the frame on top and bottom of the rack via the existing drillings in the supporting profile (2) as illustrated in Fig. 5 and 6.

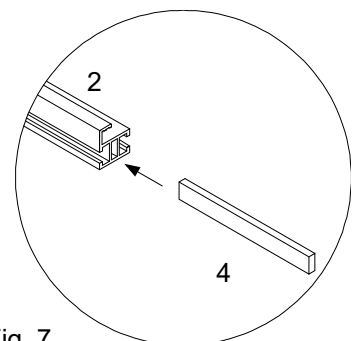


Fig. 7

ATTENTION!

All bolts and nuts for weight-bearing connections have to be tightened with a calibrated torque handle. The torque table can be found in the „Safety and installation manual for flat plate collectors“.