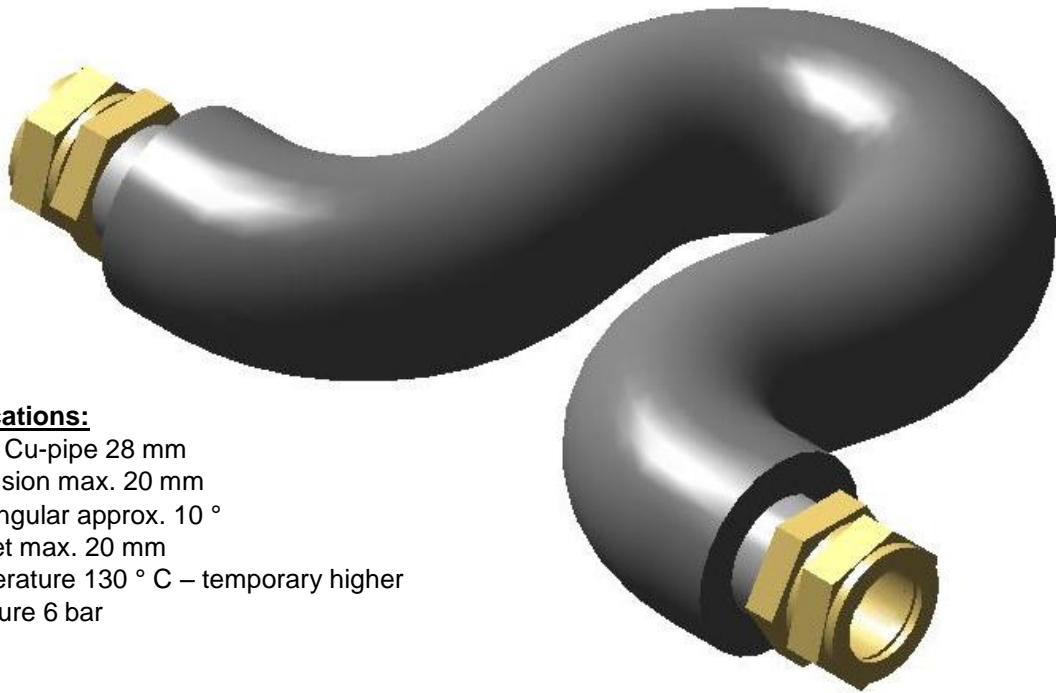




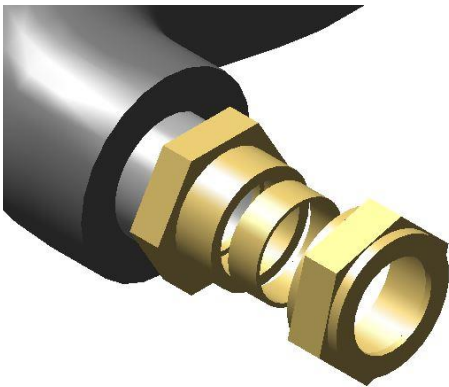
Omega expansion bend 28mm

Technical fact sheet



Technical specifications:

- suitable for Cu-pipe 28 mm
- axial expansion max. 20 mm
- deviation angular approx. 10 °
- height offset max. 20 mm
- max. temperature 130 ° C – temporary higher
- max. pressure 6 bar



NOTE:

- ✓ distance between collectors 270-300 mm
- ✓ cover screw connections and all threads with grease (punch paste)
- ✓ use support sleeves for Cu-pipe 28x1 mm !
- ✓ turn the expansion bend to prevent mechanical stress on the manifold (turn downwards)
- ✓ in case of parallel assembly: put the expansion bend on the roof plate
- ✓ resist when connecting - make sure that the manifold do not rotate - risk of damage to the collector !
- ✓ if necessary, stabilize the expansion bend (secure against twisting) (wrench width x)

ATTENTION!

All bolts and nuts for weight-bearing connections have to be tightened with a calibrated torque handle. The torque table can be found in the „Safety and installation manual for flat plate collectors“.

The actual required item number of mounting brackets and fixing points depends on the structural requirements on site, as well as depending on the application with the applicable standards and regulatory documents. In particular the standards EN1991-1 and DIN1055, respectively the standard ÖNORM M7778.