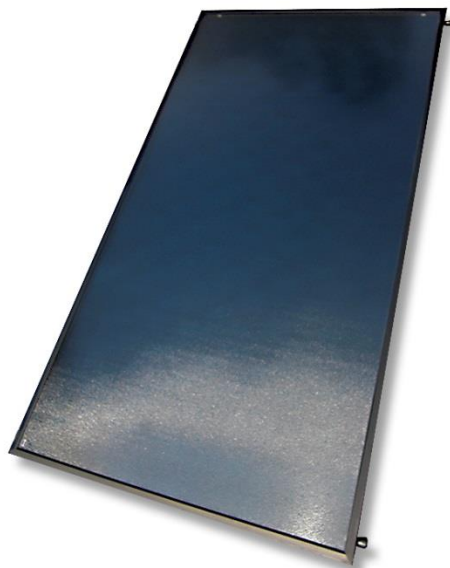
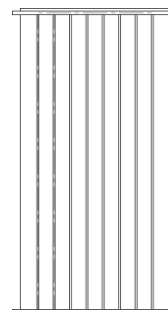


sunWin 20M



Absorber



Register number 011-7S2792 F



Assembly:	
Glass:	Hardened, hail proof (HW 3), structured solar glass, 3.2 mm, transmissivity: 91 %
Frame:	Aluminium frame, welded, top surface „natural“, (opt. black anodized), cover strip black anodized
Absorber:	Aluminium full-plate absorber (harp geometry) with highly selective coating; laser welded; absorption: 95 %, emission: 5 %, with external sensor
Rear wall insulation:	30 mm of degassing-free mineral wool
Glass sealing:	2-component silicone
Rear wall:	Made of aluminium, sea water resistant, 0.4 mm
Connections:	Compression fitting 22 mm, 4 connections on side, approved for drain-back systems and thermo-siphon systems

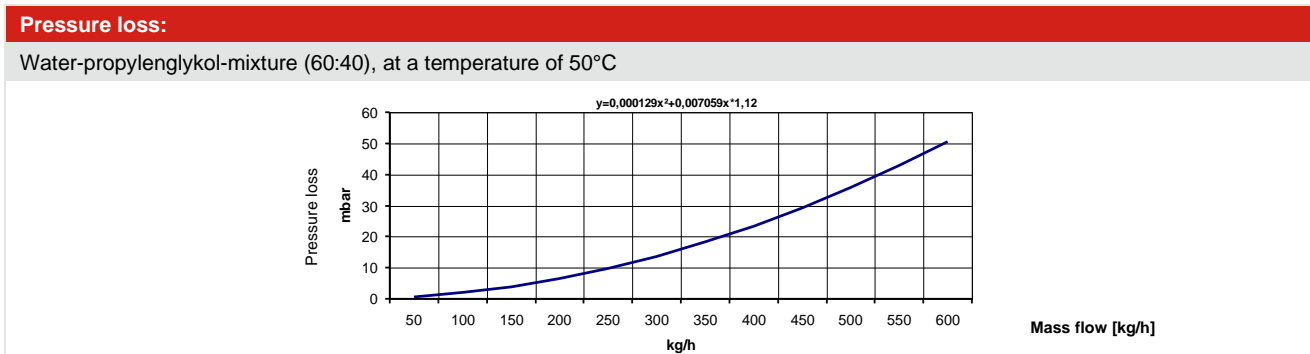
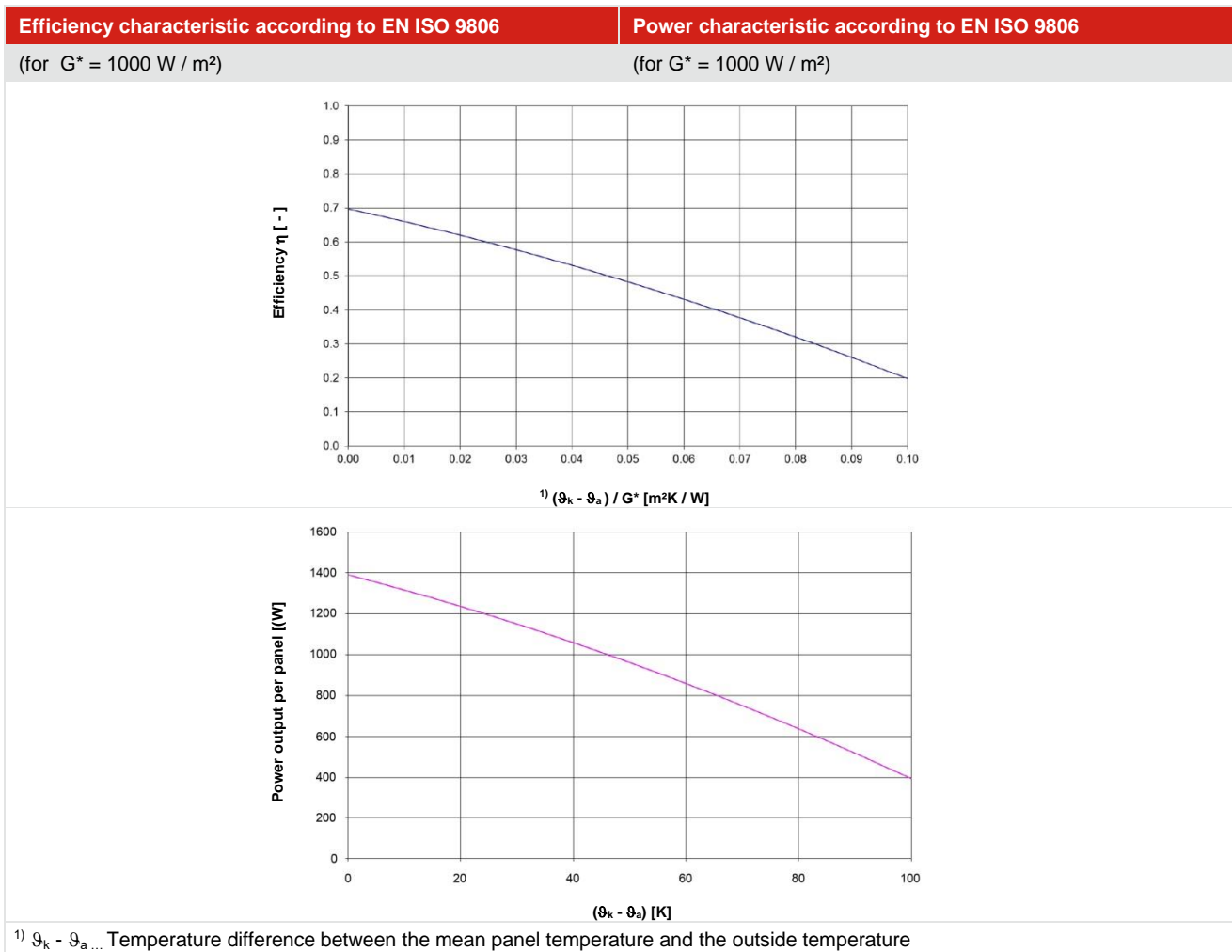
Technical data:			
Dimensions vertical (LxWxH):	2004 x 994 x 68 mm	Total volume of the collector:	2,00 lt.
Gross area:	2,00 m ²	Max. inclination:	90°
Aperture area:	1,82 m ²	Min. inclination:	15°
Absorber area:	1,85 m ²	Max. operating pressure:	10 bar
Weight without heat carrier:	29 kg	Testing pressure:	15 bar
Assembling:	Vertical, on-roof, freestanding, in-roof		

Efficiency values (according to EN ISO 9806):	
Test number:	21240660.001, TÜV Rheinland
Conversion factor η_0 :	0,702 ^{*)}
Thermal transmittance coefficient simple a_1 :	3,5960 W/m ² K ⁻¹)
Thermal transmittance coefficient square a_2 :	0,014 W/m ² K ²)
Angle factor:	0,96

*Reference: gross area

sunWin 20M

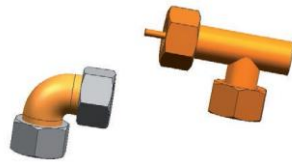
Power output in Watt according to EN ISO 9806			
	Irradiance W / m ²		
	400 W/m ²	700 W/m ²	1000 W/m ²
¹⁾ $\vartheta_k - \vartheta_a = 10$ K	474	890	1316
¹⁾ $\vartheta_k - \vartheta_a = 30$ K	308	725	1150
¹⁾ $\vartheta_k - \vartheta_a = 50$ K	120	537	963



sunWin 20M

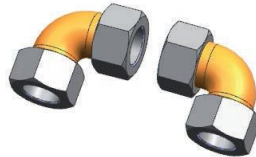
Connecting kit: Sensor

Set of connections with clamping ring (elbow) and sensor pocket; also with pre-insulated stainless-steel flexible tubes; dimension 22 mm



• *Help:* One kit is necessary for positioning the sensor!

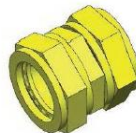
Connecting kit: with elbow



• *Help:* For further collector fields without a sensor!

Accessories:

connection 22 mm, stiff
for parallel connection of the collectors



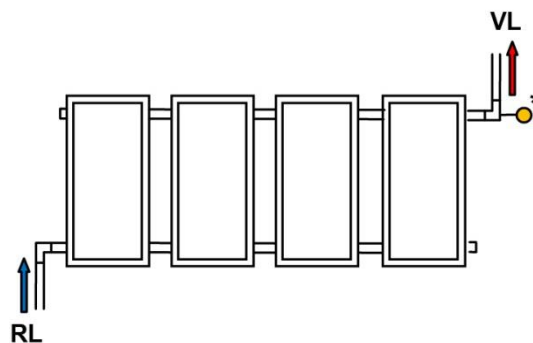
Hydraulic connection:

Install the sensor (*) on the furthest to the right collector.

Attention! If the sun is shining during the installation of the collectors the connection units can get very hot!

Attention! Make arrangements against accidents before working on the roof! Note the rules for accident prevention!

Fig. 1

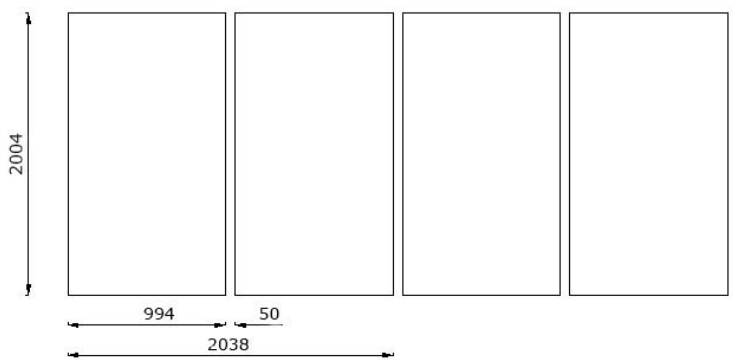


VL = forerun RL = return

• *Note:* You can connect up to 4 units of collectors in a row. Furthermore the collectors should be separated and connected according to Tichelmann principle (see Fig. 1).

sunWin 20M

Measurements type vertical:



Number of collectors	Width
2 units	2038 mm
3 units	3082 mm
4 units	4126 mm